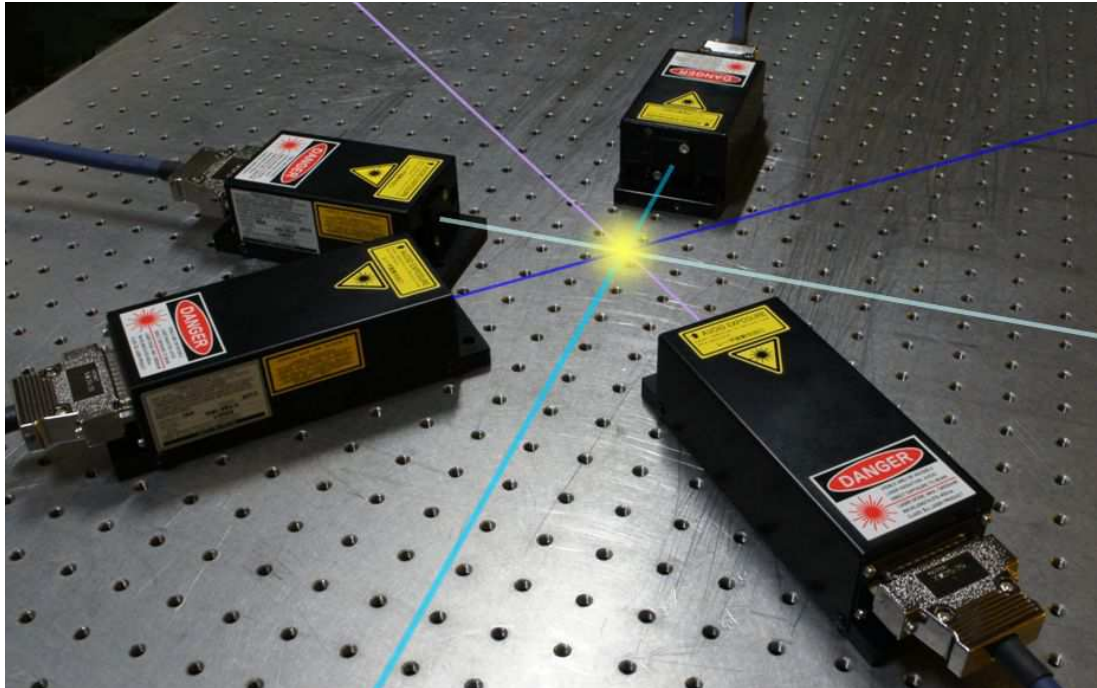


KIMMON LASER SYSTEM

Direct Diode Laser Blue-Violet Laser



Wavelength : 375nm, 405nm, 445nm, 488nm

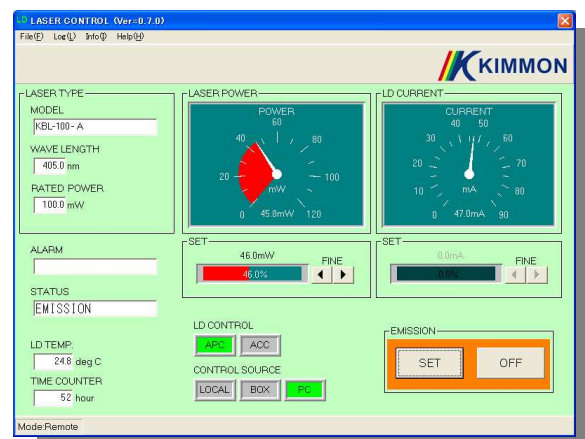
KIMMON KOHA Blue/Violet laser systems provide operational wavelengths of 375nm, 405nm, 445nm, or 488nm. Each wavelength is available in circular or elliptical beam shape.

The Blue/Violet laser systems offer exceptional power and wavelength stability in a compact design. Laser software for automatic power control (APC) and automatic current control (ACC) is included with each system.

All laser models supply excellent beam quality, serviceable for a variety of applications, with an M² factor of less than 1.2.

APPLICATION

- Photoluminescence
- Flow Cytometry
- Confocal Microscopy
- DNA Sequence
- Printing and CtP(Computer to Plate)
- Laser Direct Imaging
- 3 D Modeling
- Wafer Surface Inspection



Laser Control Software

SPECIFICATIONS

Model	Wavelength (nm)	Power (mW)	Beam Shape	Polarization	Polarization Ratio	Beam Diameter 1/e ² (mm)*1	Beam Divergence (mrad)*2	Noise, RMS @1Hz~10MHz (%) *2	M ² *2	Power Stability (%) *3	Weight (g)	Laser Class
KAL-55-A	375 ± 5	55	Elliptical	Linear	> 100:1	< 1.5×3.5	< 1.2	< 0.5	< 1.2	≤ ±2.0 (8 hours)	430	3B / IIIb
KAL-50C-A		50	Circular			< 2.5	< 0.8				550	
KBL-100-A	405 ± 5	100	Elliptical			< 1.5×3.5	< 1.2				430	4 / IV
KBL-90C-A		90	Circular			< 1.5	< 0.8					
KBL-S130-A		130	Elliptical			< 1.5×3.5	< 1.2					
KBL-S120C-A		120	Circular			< 1.5	< 0.8					
KCL-80-A	445 ± 5	80	Elliptical			< 1.5×3.5	< 1.2				430	3B / IIIb
KCL-75C-A		75	Circular			< 1.5	< 0.8				550	
KDL-55-A	488 ± 5	55	Elliptical			< 1.5×3.5	< 1.2				430	
KDL-50C-A		50	Circular			< 1.5	< 0.8				550	

*1 Measured at 100mm from output coupler

*2 By the measuring method of our company

*3 At 25°C Constant Temperature

* Transverse Mode : TEM₀₀

* Environmental Condition (Operation) Temperature 10~35°C, Humidity ≤90%RH

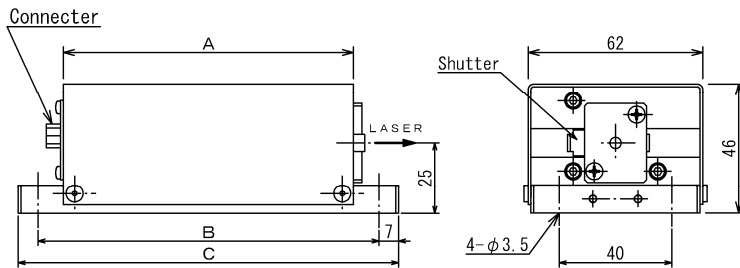
* Environmental Condition (Storage) Temperature -10~50°C, Humidity ≤90%RH

* Non-condensing

* Specifications subject to change without notice

Dimensions (mm)

Laser Head



Laser Head Model	A	B	C
KAL-55-A, KBL-100-A KCL-80-A, KDL-55-A	103	121	135
KAL-50C-A, KBL-90C-A KBL-S130-A, KBL-S120C-A KCL-75C-A, KDL-50C-A	143	161	175

Controller

